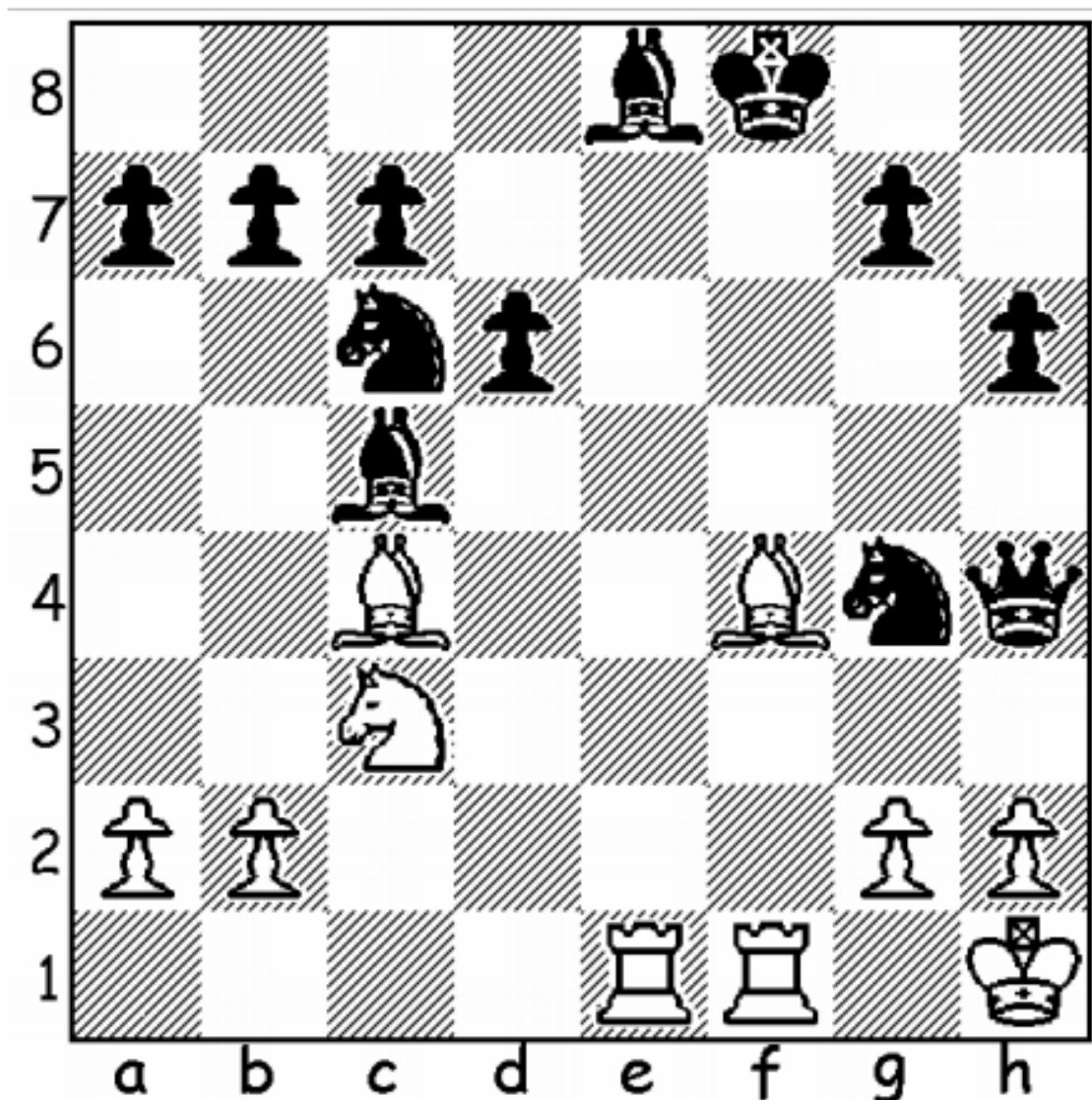


Chess Puzzles

Have a go at these chess puzzles from chesspuzzles.com, finding the moves to achieve checkmate.

Puzzle 1

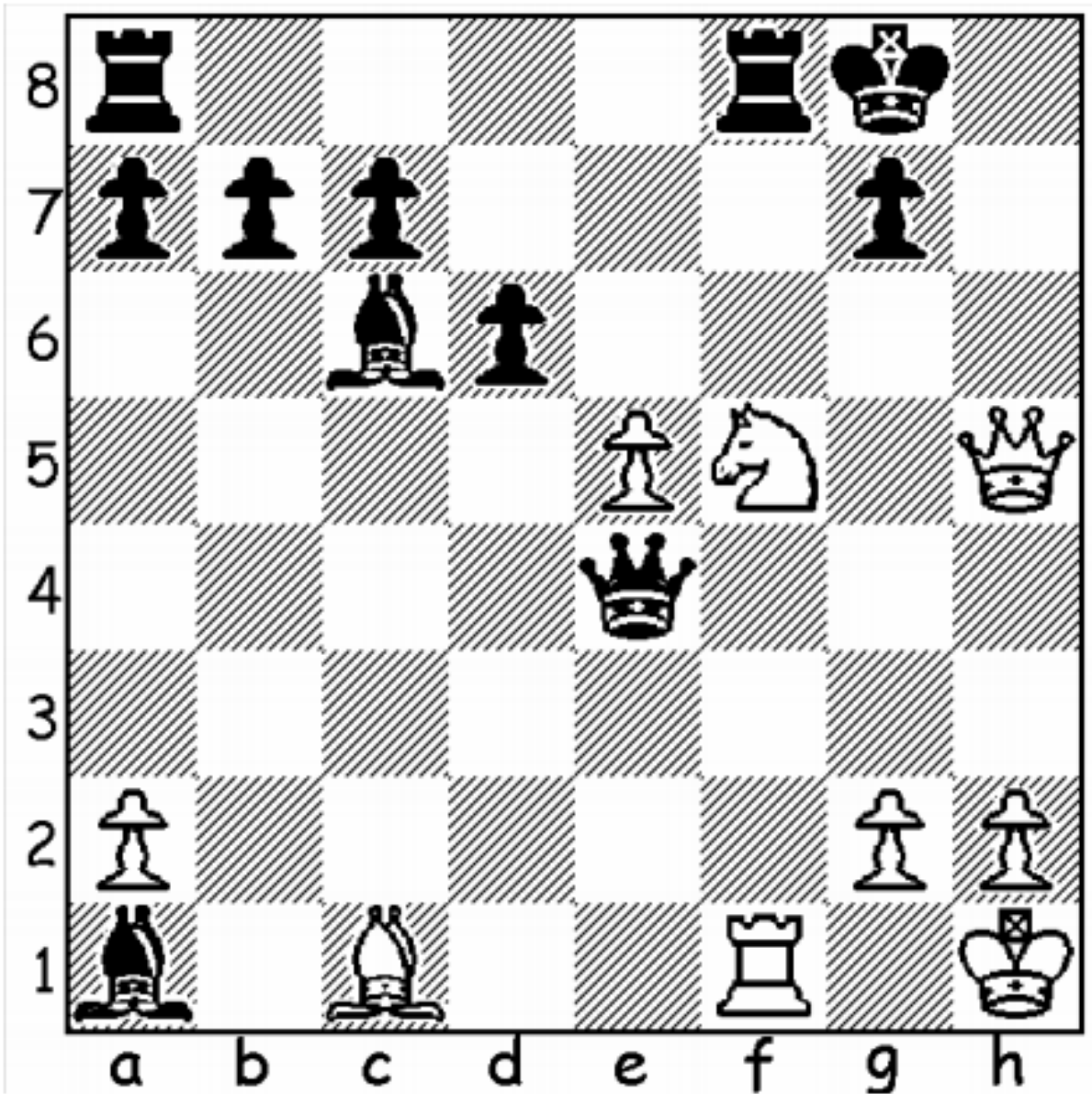
Checkmate in 1 move:



White to move:

Puzzle 2

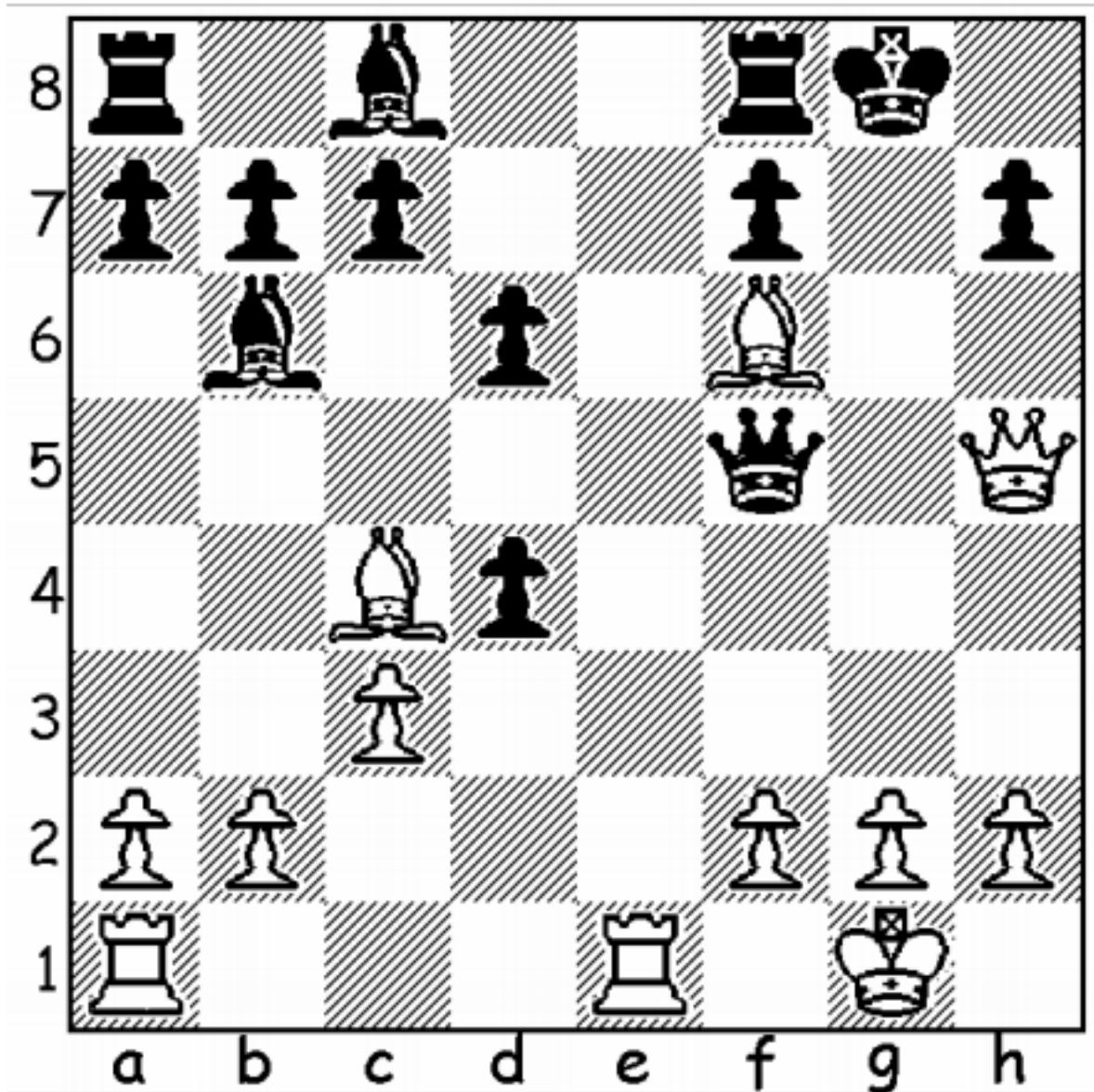
Checkmate in 1 move:



White to move:

Puzzle 3

Checkmate in 2 moves:



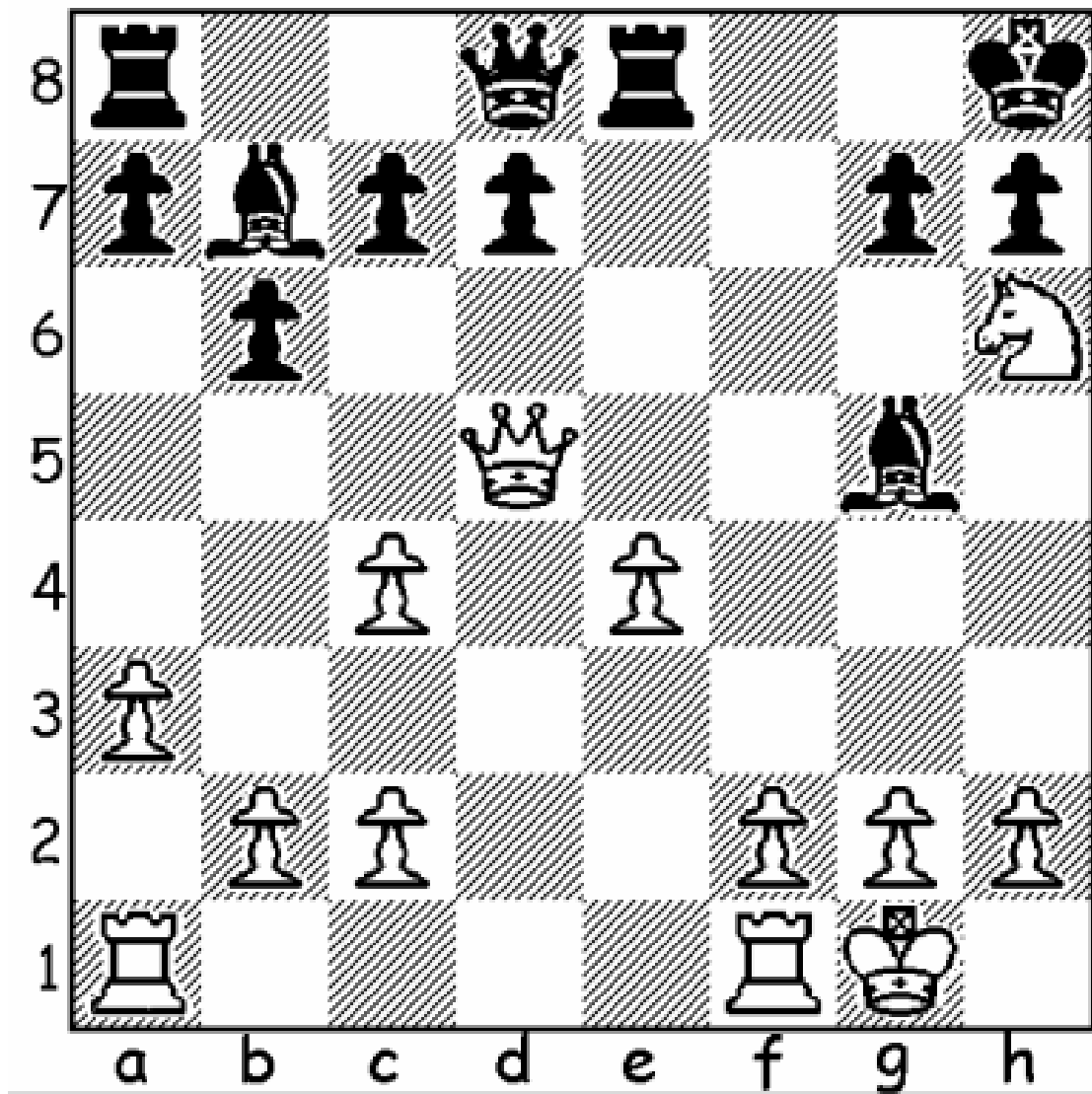
White to move:

1.

2.

Puzzle 4

Checkmate in 2 moves:



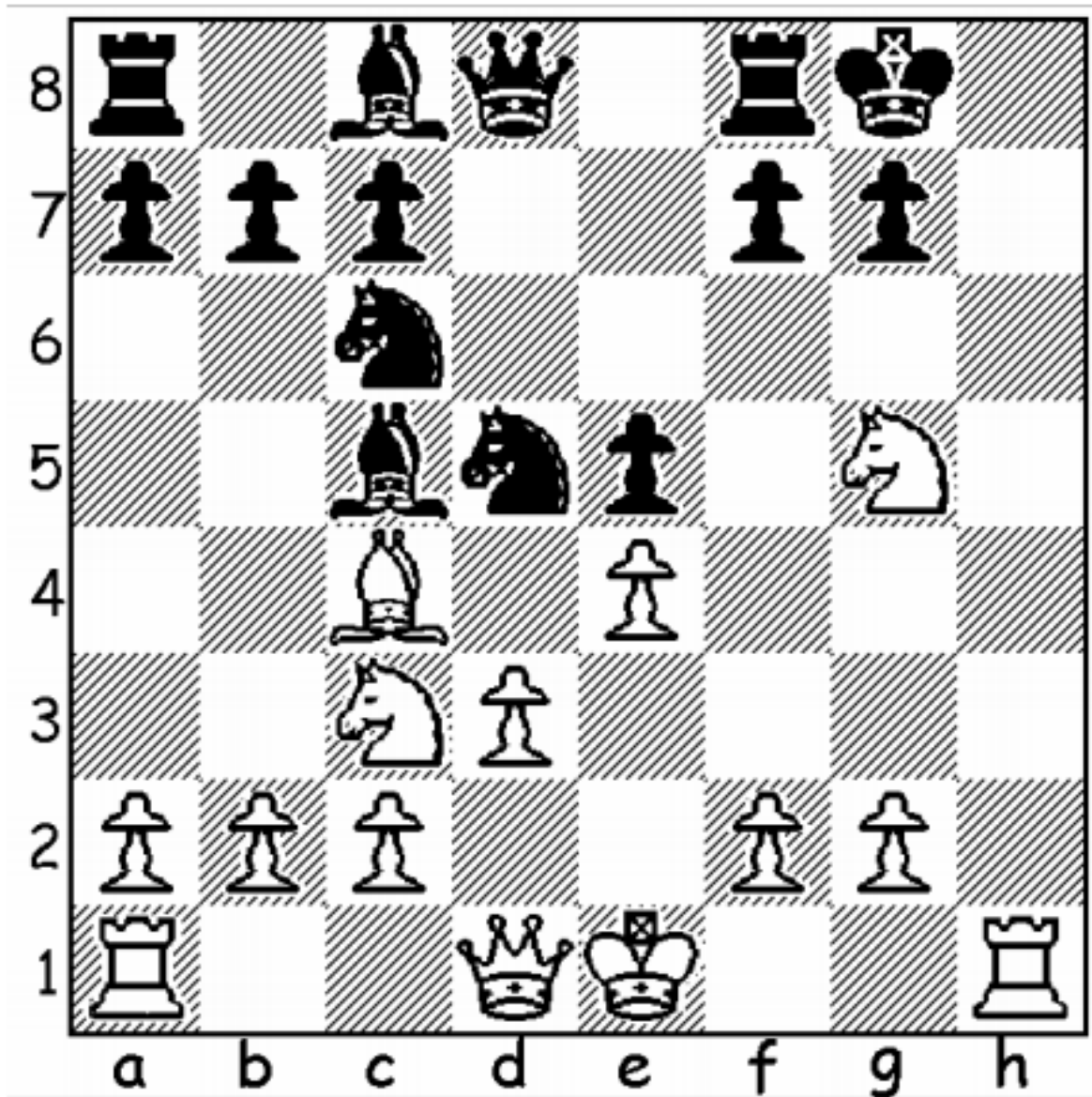
White to move:

1.

2.

Puzzle 5

Checkmate in 3 moves:



White to move:

1.

2.

3.

Chess Puzzle

Answers:

Puzzle 1:

Bxd6#
(White Bishop to d6)

Puzzle 2:

Ne7#
(White Knight to e7)

Puzzle 3:

1. Qxf7+ Rxf7
2. Re8#

(White Queen to f7, Black Rook to f7, White Rook to e8)

Puzzle 4:

1. Qg8+ Rg8
2. Nf7#

(White Queen to g8, Black Rook to g8, White Knight to f7)

Puzzle 5:

1. Rh8+ Kxh8
2. Qh5+ Kg8
3. Qh7#

(White Rook to h8, Black King to h8, White Queen to h5,
Black King to g8, White Queen to h7)